

User's Guide

For English

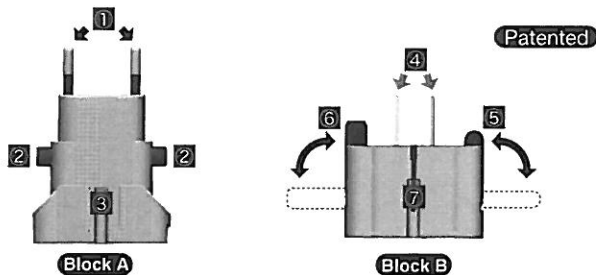
Go!conW2

Unable to change the voltage.

Please read the manual carefully before using the product.

© 2009 SHIROSHITA INDUSTRIAL CO LTD
18QA0156AN

1 Product Descriptions



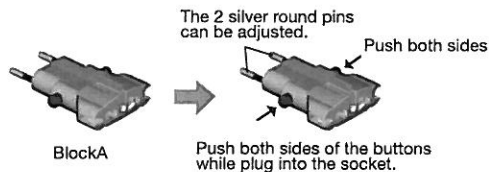
- Block A**
- ① 2 silver round pins
 - ② Width adjustment button for 2 silver round pins
 - ③ Slide frame for BlockB
- Block B**
- ④ 2 silver flat pins for O,O2,A type
 - ⑤ Plastic round pin for B3 type
 - ⑥ Plastic flat pin for BF type
 - ⑦ L shaped flat pin for O2 type

2 Instructions

Change the form of the product as same type as a wall socket, and plug into the wall socket, and then plug your electronics into the receptacle of the product.

B SE C How to use B, SE, C type of the socket

Use blockA only. Adjust the 2 silver round pins with a width adjustment button of GoconW2 to plug into the socket.



B type

B type socket

B type can be used in:
Singapore, China, Kenya, South Africa, Kuwait, India, Indonesia, Nepal, Bali, Mongal, etc.

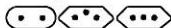


B type socket



C type

C type socket



C type can be used in:
Algeria, Argentina, Italy, Israel, Iran, India, Indonesia, Egypt, Austria, Kuwait, Saudi Arabia, Switzerland, Sweden, Thailand, China, Germany, New Caladonia, Norway, Hungary, Finland, France, etc.

C type socket



SE type

SE type socket



SE type can be used in:
Israel, Iran, Indonesia, Egypt, Austria, Neatherland, Korea, Greece, Kuwait, Saudi Arabia, Switzerland, Sweden, Spain, Germany, New Caladonia, Norway, Hungary, Finland, France, Belguim, Portgal, Morocco, etc.

SE type socket

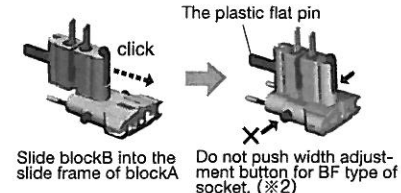


BF B3 How to use BF, B3 type of the socket

Use a combination of blockA and blockB. Choose the plastic round pin or plastic flat pin according to the shape of socket, and slide blockB into the slide frame of blockA.

BF type BF type socket

BF type can be used in:
Arabia, United Arab Emirates, Argentina, United Kingdom, Iran, India, Egypt, Saudi Arabia, Jamaica, Singapore, Thailand, Chili, HongKong, Malaysia, etc.



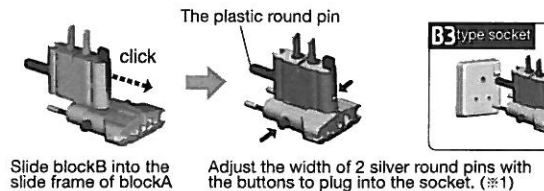
BF type socket



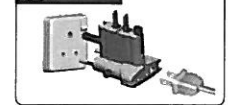
The plastic flat pin and the plastic round pins are for the pins to open the shutter. ※2 Some socket has a rare type of shutter inside the plug holes, and you can not plug into the socket if you push the width adjustment button.

B3 type B3 type socket

B3 type can be used in:
United Arab Emirates, Iran, India, Indonesia, Egypt, Kuwait, Saudi Arabia, Jamaica, Chili, Nepal, HongKong, Macao, Malaysia, etc.



B3 type socket



A type

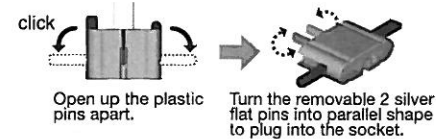
A type socket



A type can be used in:
United States, Egypt, Canada, Cambodia, Guam, Saipan, Saudi Arabia, Thai-wan, Philippine, Brazil, etc.

A How to use A type of the socket

Use blockB only. Turn the removable 2 silver flat pins(for O,O2, A type) into the parallel shape for A type outlet.



A type socket



O O2 How to use O and O2 type of the socket

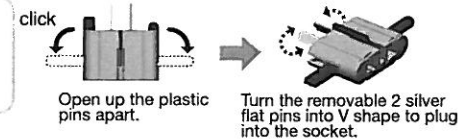
Use blockB only. Turn the removable 2 silver flat pins(for O,O2, A type) into the O or O2 shape as shown.

O type

O type socket



O type can be used in:
Austria, Cook Islands, New Zealand, Fiji, Papua New Guinea, etc.



O type socket

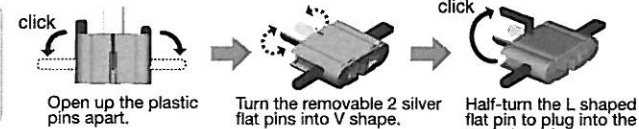


O2 type

O2 type socket



O2 type can be used in:
China, etc.



O2 type socket



Some socket has a shutter inside the plug holes for safety as O2 type of outlet. Use with the L shaped flat pin to open the shutter if it necessary.

